

## Head Teacher's Note:

Hi everyone

Welcome to our first newsletter of this academic year. It is so lovely to see all of the children in school. We are extremely impressed at how well they have settled in considering we have many pupils who are returning after almost six months of home learning; and also many new pupils joining the school whether in Reception or across the school. It is so rewarding to see happy faces and friendships developing or rekindling.

Bronte is also happy to be back in school especially because of how much fuss she gets from the children and also plenty of exercise via several 'daily miles' with different classes.

We cannot deny the different start to a year and I think one of the most difficult things to get used to is not being able to welcome you as parents into the school building. However I will endeavour to be on the gates most days to say 'Hello.' and you know that you can contact the class teacher via phone or email.

I would like to thank all of you for being so supportive of the measures we have put in place to minimise the risk of any spread of infection.

Julie Bratt

## Dates for your diary



**Friday 23<sup>rd</sup> October:**  
End of Term

**Monday 2<sup>nd</sup> November:**  
School returns

**Monday 9<sup>th</sup> November:**  
Flu vaccination (further details closer to the date)

## Class Heroes:

Reception Rangers:

Whole Class

Shooting Stars:

Skye

Racing Rockets:

Adriana

Cosmic Comets:

Sebastian

Skyflyers:

Louise

Voyagers:

Lola

Starships:

Phoebe

Explorers:

Ella

Red Arrows:

Nicole

Well Done!



## This Week's Attendance:

Reception Rangers (M):	n/a
Reception Rangers (S):	n/a
Shooting Stars:	86.4%
Racing Rockets:	90.0%
Cosmic Comets:	93.3%
Skyflyers:	85.8%
Voyagers:	90.0%
Starships:	88.0%
Explorers:	89.5%
Red Arrows:	73.6%

## COVID 19 Tests

If your child has had a COVID 19 test, we need a copy of the result. Please forward email you receive or screen shot of a text message to [admin@albrighton-pri.shropshire.sch.uk](mailto:admin@albrighton-pri.shropshire.sch.uk)

Please remember that until you receive the results of the test - your child and family members should self-isolate.

## School Photographs:

Braiswick Photography came into school on Thursday to take the children's photographs.

The photographs will be sent out as soon as we receive them.

Bronte didn't want to be left out and put on her school jumper on for a picture!





Meals cost £2.40 per day for children in Nursery and KS2 (Years 3 to 6). KS1 (Reception, Y1 & Y2) are free.

Menu w/c 14<sup>th</sup> September 2020

#### Marvellous Monday

Quorn Nuggets with Noodle Chow Mein / Pizza Boats

#### Tasty Tuesday

Sausage Roll / Cheese & Onion Roll

#### Wicked Wednesday

Roast Chicken with Yorkshire Pudding / Quorn Fillet

#### Thrilling Thursday

Beef Grill / Vegetable Grill

#### Fruity Friday

Cheese & Tomato Pizza / Mince beef & Vegetable Pie

Please see the website for full details of the menu



#### Parking

Can all parents/carers please ensure they do not park on the yellow zigzag lines or block our neighbours' entrances.

Please can you not block the entrance to the car parks particularly when dropping off or picking up from Zoom Club. It causes a traffic jam and makes it difficult for other users of the car park.



#### Illness

It important to clarify the school's position with regards to illness of your child:

- If your child has a cold but feels ok and doesn't have a temperature or a cough or any other symptoms that may be COVID related - they may come to school.
- If their cold is accompanied by any of the above, please inform us and book a test for that day - you should receive your results less than 24 hours following your test. **Please remember that until you receive the results of the test - your child and family members should self-isolate.**
- If the test is negative then your child may return to school.
- If your child feels unwell, for whatever reason, they should stay at home but please keep us informed.
- In the event of a positive test, please inform us immediately.

It will be helpful to refer to the attached flowchart or our risk assessment which advises you on actions to take if you are concerned that your child may have coronavirus. The risk assessment is on our website.



#### Outdoor PE

Pupils in Y1-Y6 are required to come to school in their outdoor kit on their outdoor PE day.

They will remain in their PE kit throughout the day.

Indoor kit should be left in school and taken home only at half-term and end of terms. This ensures pupils are always appropriately equipped to participate.

#### Outdoor PE Timetable

Reception Rangers:

Fridays

Year 1 & 2 (Shooting Stars, Racing Rockets and Cosmic Comets):

Tuesday

Year 3 & 4 (Skyflyers and Voyagers):

Thursday

Year 5 & 6 (Starships, Explorers and Red Arrows):

Wednesday



#### School Meals

The cost of a school dinner for children in Nursery and KS2 (Years 3 to 6) is £2.40 per day.

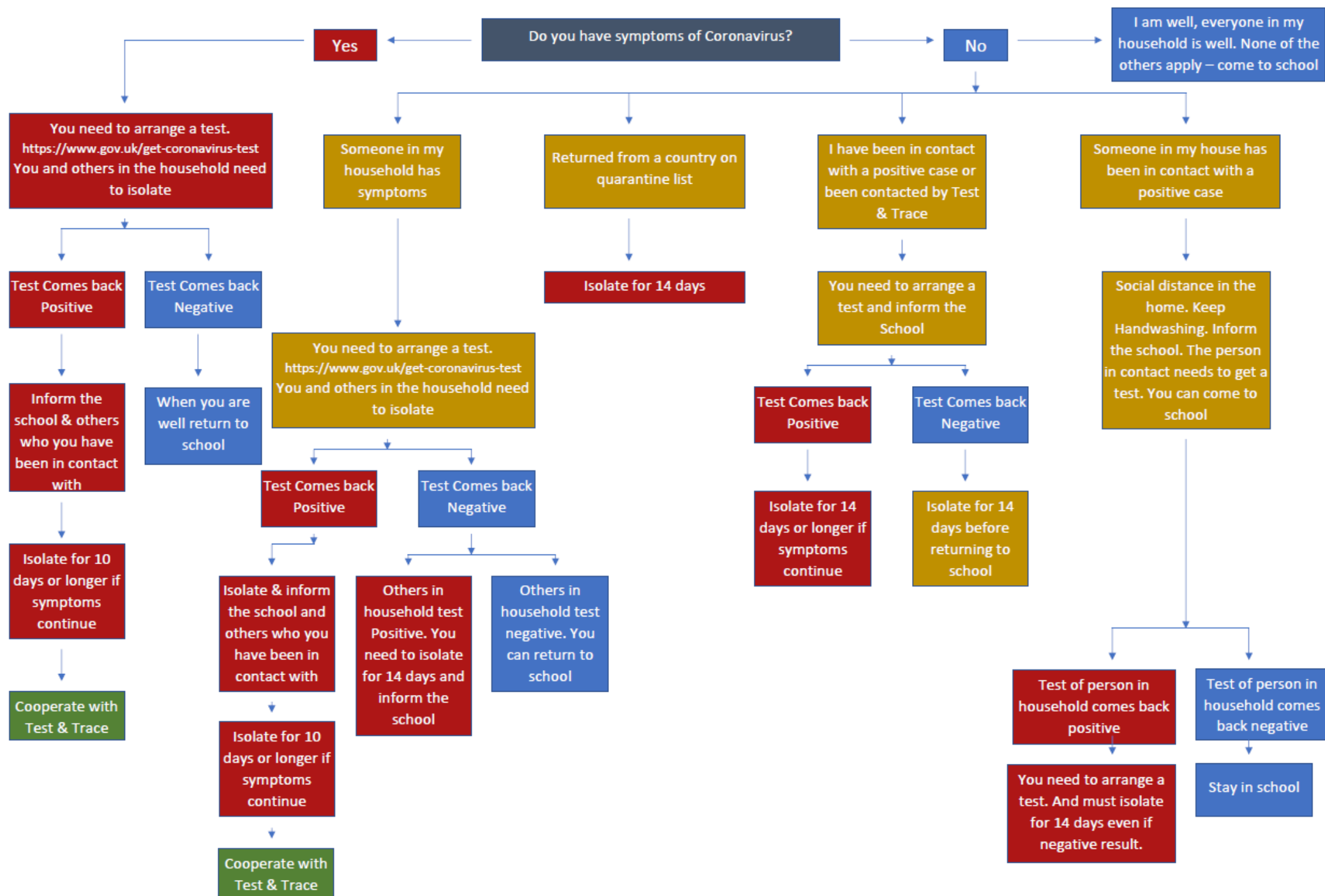
Payment for school dinners must be paid in advance using our on-line system, ParentPay. If there are insufficient funds on your child's account, you will be asked to pay immediately or bring sandwiches into school.

#### ParentPay

All email communication uses ParentPay. If you haven't really done so, please activate your account as soon as possible. If you have issues, please contact the school office.



A huge thank you to Albrighton Craft Group who have raised £1,000 for our nursery towards the purchase of an external canopy. It is very much appreciated.





Fascination

Excitement

# Albrighton Primary School and Nursery

A happy nurturing environment where the  
individuality and uniqueness of every child matters

Brand New Baby Room Opening  
September 2020



Laughter



Inquisitive

Twinkling Stars age 0-2   Shining Stars age 2-3   Bright Stars age 3-4  
Childcare and education from birth to 11

Confidence



E-mail: [nursery@albrighton-pri.shropshire.sch.uk](mailto:nursery@albrighton-pri.shropshire.sch.uk)

Phone: 01902 372558

Newhouse Lane, Albrighton, WV7 3QS